

REF. 068650

Essential for safety, the ERGOTECH+ 5-9/9-13 TRUE COLOR optoelectronic hood protects the welder's face and eyes from UV, infrared and splashes. Fully automatic, the mask switches from clear to tinted state in a fraction of a second as soon as it is primed. Comes with a headband, it frees the welder's hands and offers all the necessary comfort for welding work.

## CHARACTERISTICS

- XL screen
- External ergonomic adjustment knob (sensitivity/delay/shade) and easy to use even with gloves.
- Large sensitivity due to 4 sensors
- TIG welding > 2A
- Active filter : shades 5-9 / 9-13
- **Range 5-9 : special low intensity**
- Technology TRUE COLOR



Standard LCD screen



Technology TRUE COLOR

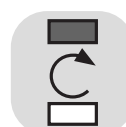


## TECHNICAL DATA

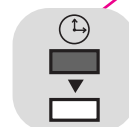
Protection UV/IR	DIN 15
Classification	1/1/1/1
Clear shade	3
Dark shade	5 > 9 - 9 > 13
Reaction speed	0,08 ms
Back to clear speed	0,15 > 0,8 sec
Field of vision	100 x 67 mm
Power supply	solar + batteries (CR2450)
Weight	560 g
Adjustable	Sensitivity, delay, shade, grinding
Light sensor	4
Applications	MMA 5 > 400 / TIG 2 > 300 / MIG-MAG 5 > 400
Standards	CE / EN 175B / EN 166 / EN 379



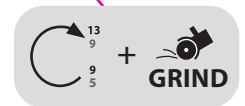
Painting protection



Sensitivity



Delay

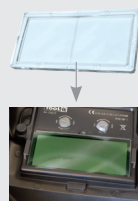
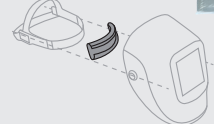
Knob  
5 > 9 - 9 > 13Delivered with a headband  
MultiFit+

Shade

## OPTIONS

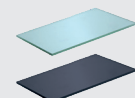
Carry bag for  
helmet welding  
043299

Antiperspirant - headband

043466  
x2

**zoom x2**  
Magnifying glass  
for Zeus, Spaceview,  
Ergotech & Alien  
True Color  
x1  
042780

## LENSES



114 x 133 (x10)	043893
103,7 x 69,5 (x5)	077102